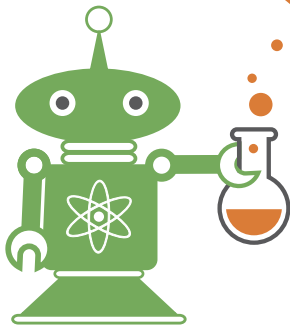


FY2014 Annual Report

September 1, 2013 - August 31, 2014

*“Do we get to see the scientists today?”
-Student in Winthrop Public Schools*



SCIENCE
FROM SCIENTISTS

SCIENCEFROMSCIENTISTS.ORG



Since 2002, Science from Scientists has established itself as an organization with a track record of success in improving student attitudes and aptitudes in STEM. We recognize the importance of working with classroom teachers and take seriously the need to evaluate and improve our program with each passing year.

As scientists, we are all passionate about what we do and we thank you for your interest in our program. We hope you will join us in continuing to build a strong foundation for youth in STEM across our great nation.

Dr. Erika Ebbel Angle
Founder, Chairman, & ED
Science from Scientists

Annual Report Summary

In-School STEM
Enrichment

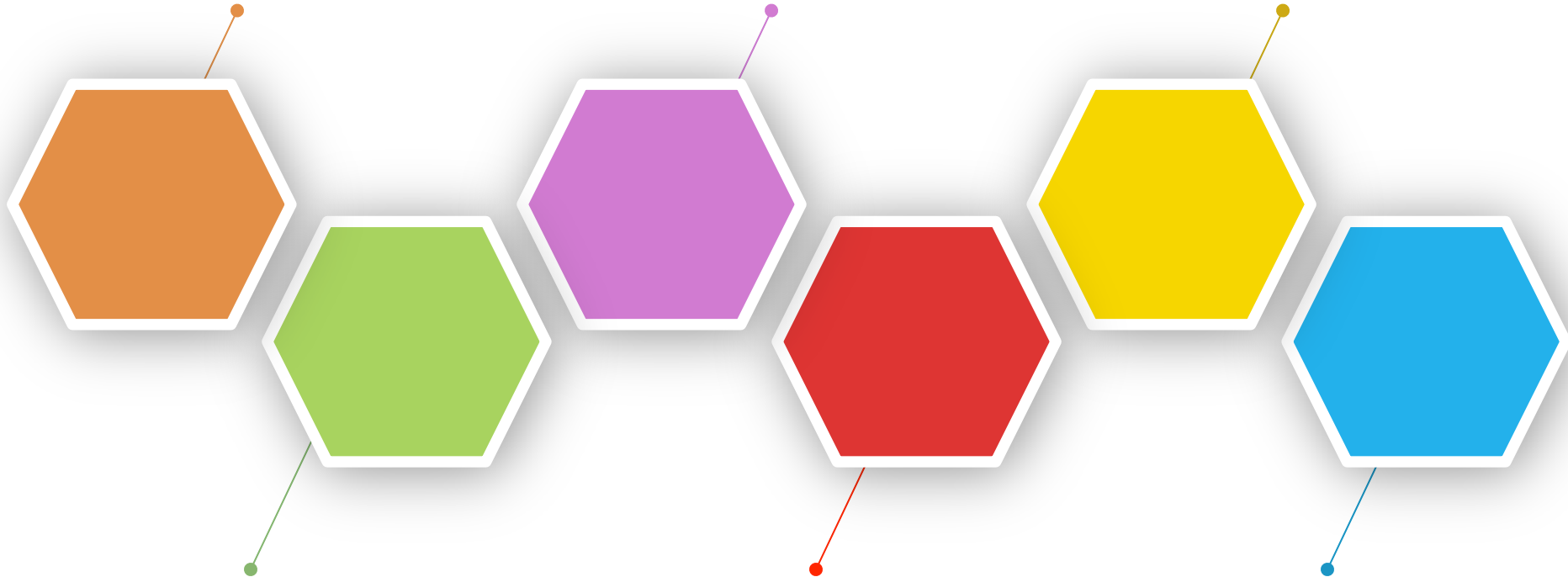
Boston Citywide
Science Fair

Financials &
Supporters

Partnerships

Special Events
& Outreach

Impact





In-School STEM Enrichment

SfS teaches science to students in Lawrence Public Schools (May 2014)



25 SCHOOLS

Our highest enrollment ever in the In-School Module-Based STEM Enrichment Program was during the 2013-2014 academic year included schools in Revere, Chelsea, Marblehead, Milton, Salem, Winthrop, Boston, Everett, Malden, Winchester, Newton, Weymouth and Plainville

30 SCIENTISTS

Our team consisted of 22 Instructors & 8 Core Staff developing and delivering hands-on science

3000 STUDENTS

Our high-touch program is inclusive of all students in the classroom, especially those who haven't shown interest or proficiency in STEM



Partnerships

Students explored the science of soils and much more in the CampBio summer Vacation Program at the Whitehead Institute for Biomedical Research (July 2014)

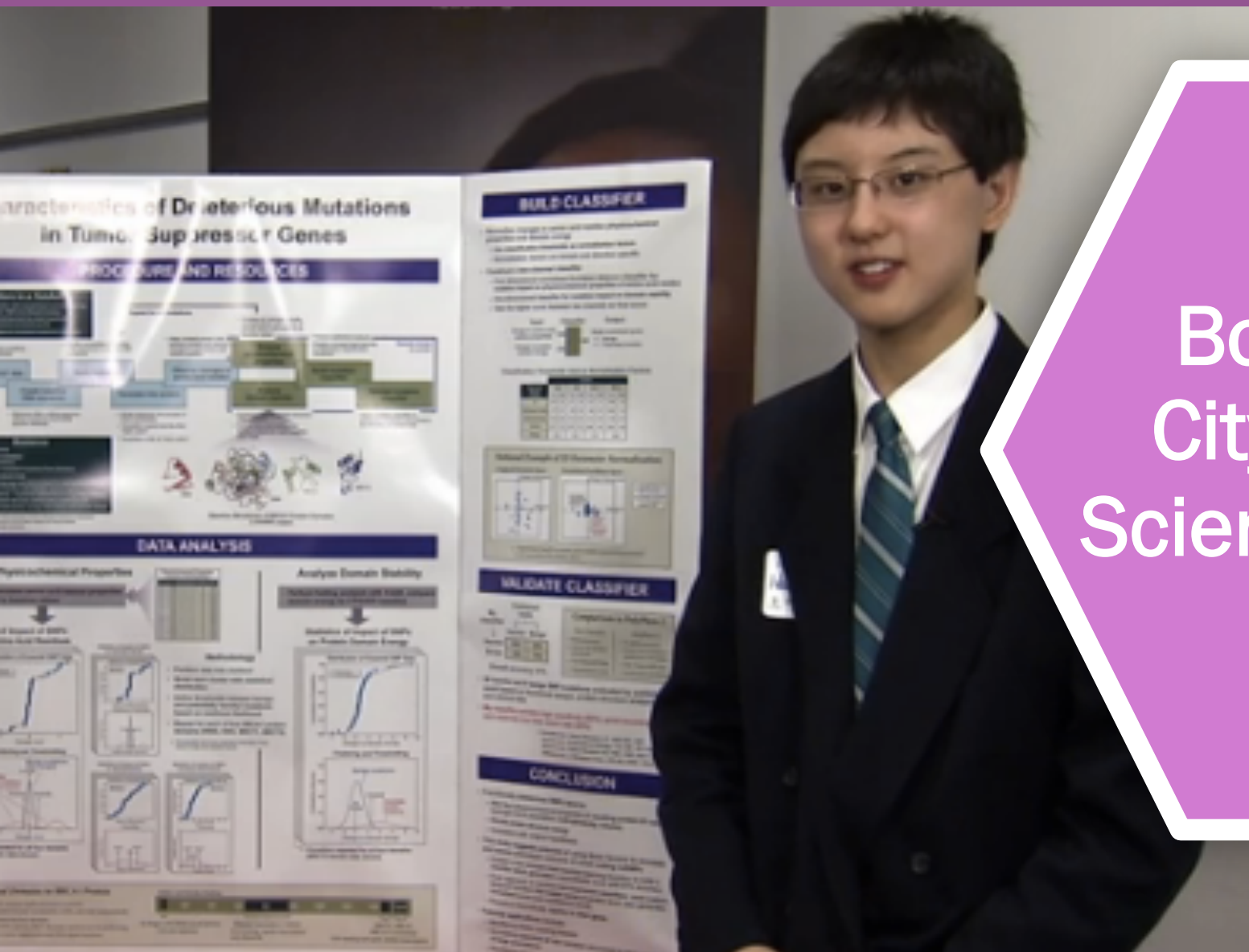


82 KITS

SfS provides all of the materials and supplies for each of our STEM standards-based lessons, which are stored in kits that can be easily transported to schools, community organizations, and our local partners.

3 VACATION PROGRAMS

Vacation Programs are week-long science investigations around a theme such as “Get a Clue!” our CSI forensic science mystery or “CampBio” our theoretical and applied biology program in partnership with the Whitehead Institute in Cambridge



Boston Citywide Science Fair

Nathan Han, freshman at Boston Latin School, who went on to be the winner of the 2014 Intel International Science Fair (ISEF) was filmed for Comcast programming (March 2014)



SfS partners with Boston Public Schools & Northeastern University to co-run the Boston Citywide Science Fair.

350 FUTURE SCIENTISTS & ENGINEERS

On February 28th & March 1st, Boston's middle and high school students gathered at Northeastern University to share their research experiences

2,000 VISITORS

Attendees included Mayor Martin Walsh who visited our blow-up planetarium in the resources area for families

\$22,000 RAISED

SfS supports student cash prizes and scholarships to the International Science & Engineering Fair (ISEF)



Special Events & Outreach Programs

Science Theater travels to Epcot during Engineering Week (February 2014)



25 SHOWS

Over February Break, also known as Engineering Week, SfS brought our Science Theater program to Walt Disney World.

15 MINUTES

Length of the Science Thrills Live! Show featuring Science from Scientists at Raytheon's Sum of all Thrills attraction.

1750 VISITORS

Every show was completely packed! We were thrilled so many families wanted to learn more about science on vacation.



Financials & Supporters

TBF's Teacher Advisory Board votes to award SfS \$15,000 to take a Boston school off the program waitlist for the 2014-2015 academic year (May 2014)

\$453,603

Total FY2014 Budget

\$375,000

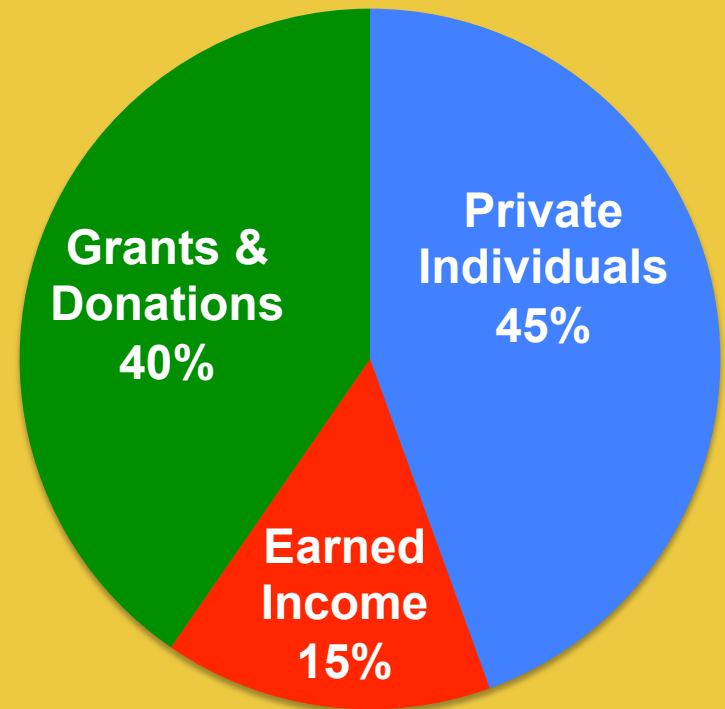
In-School Module-Based
STEM Program Budget
for 25 Schools

\$20,000

Cost per Partner School

\$120

Cost per Student



Thank You to our Gold & Silver level sponsors for their continued support

Amgen

The Llewellyn Foundation

The Boston Foundation

Liberty Mutual

Boston Scientific

New England Biolabs

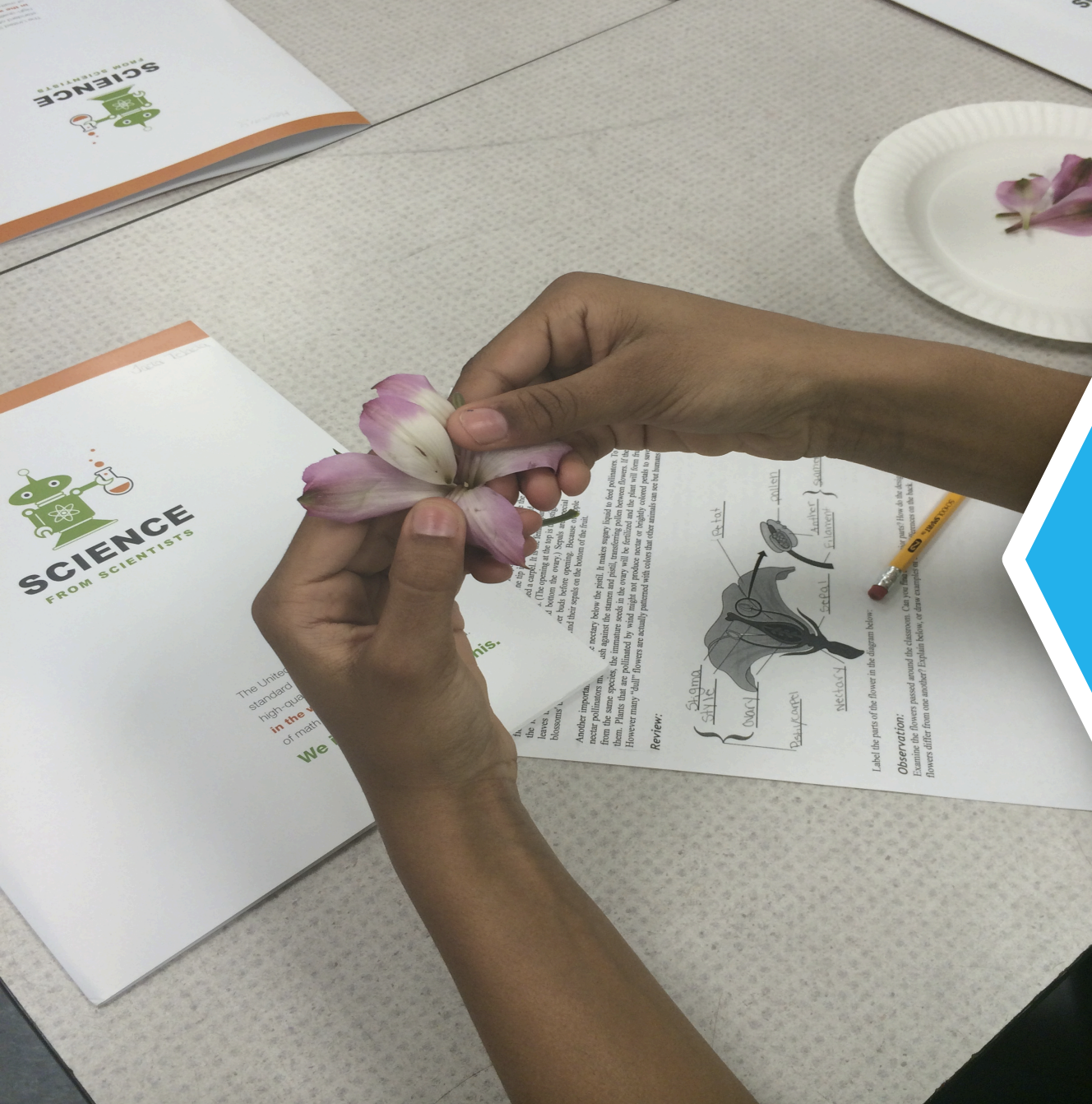
Cubist Pharmaceuticals

Norman Read Trust

Genzyme

Raytheon

TUGG



Impact:
Moving the
Needle on
MCAS

A student dissects *Alstromeria* spp. during our lesson on plant anatomy (September 2013)



20% INCREASE IN STE MCAS SCORES

Schools that added SfS to enrich their science curriculum saw an average 20% increase in the number of students scoring Proficient or Advanced on the 5th grade Science, Technology/Engineering MCAS exam

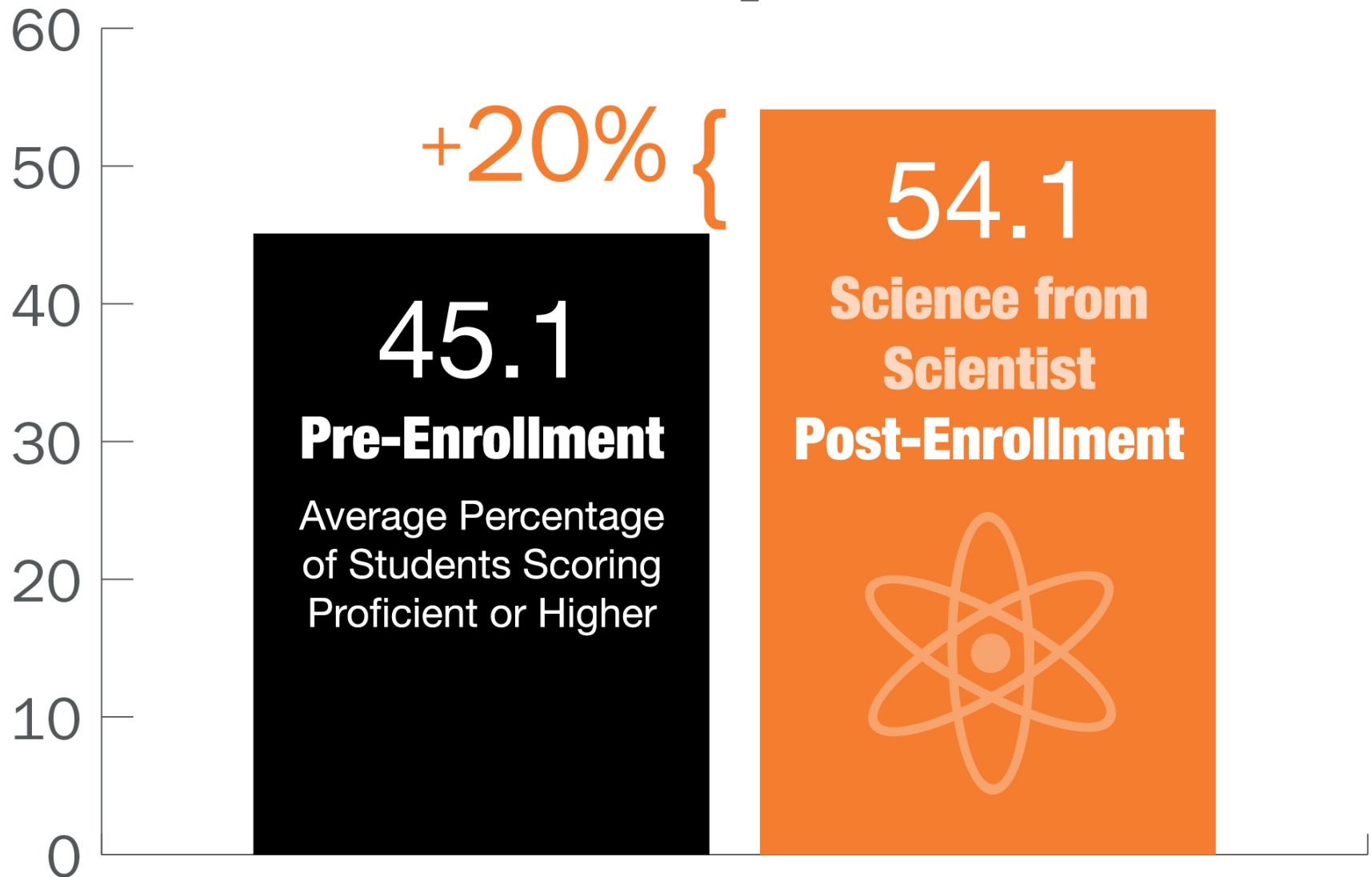
34% INCREASE FOR UNDER-PERFORMING SCHOOLS

For SfS partner schools that score below the state average, 34% more students scored Proficient or Advanced

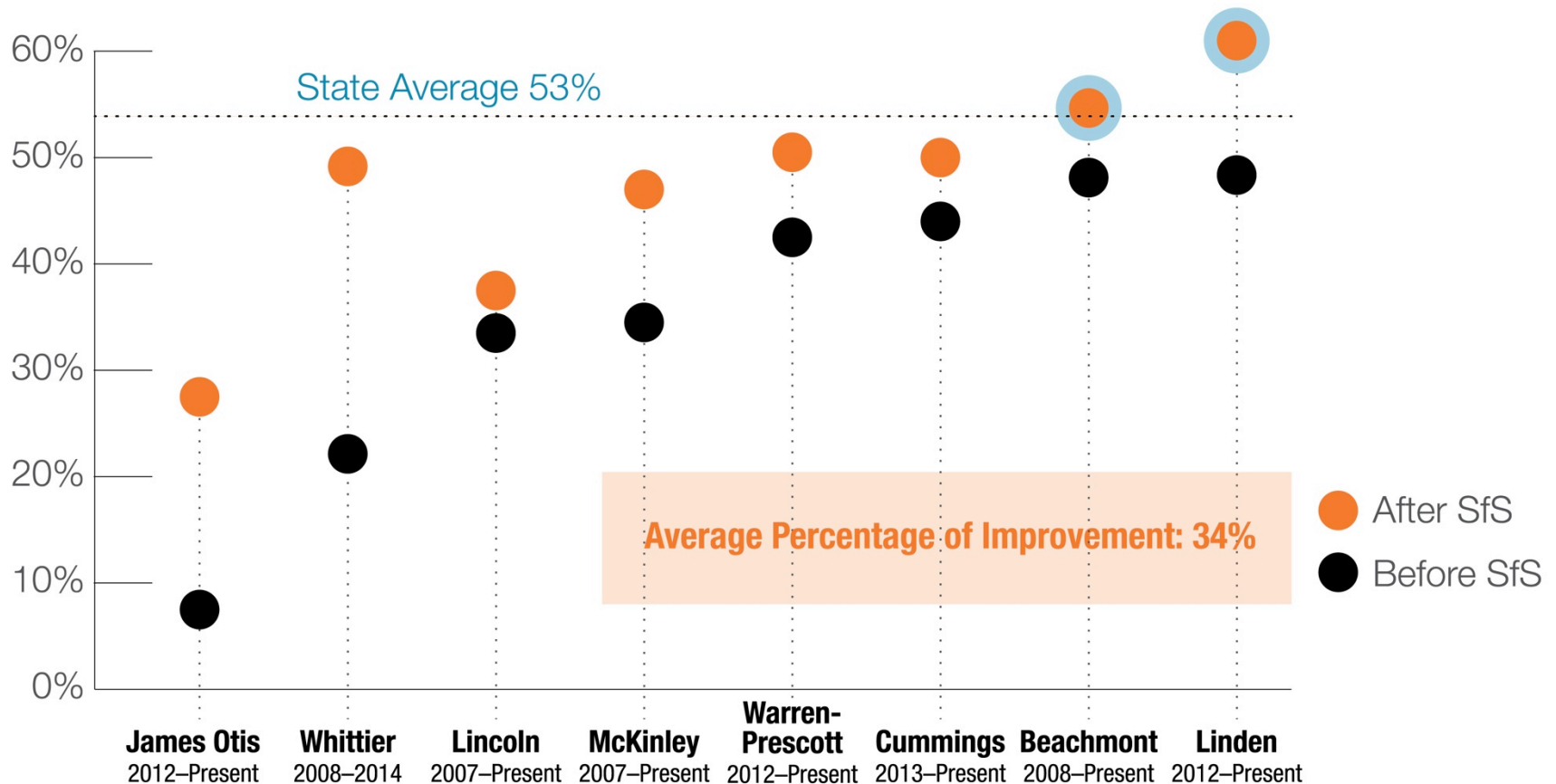
80% INCREASE IN PRE/POST QUIZ SCORES

Over 45,000 quiz results showed 80% of classes demonstrated they acquired and retained new STEM knowledge between SfS visits

STE MCAS Improvement



Before and After Comparison of Percentage of Students Scoring Proficient/Advanced on STE MCAS at Under-Performing Schools



Biochemist and pageant winner Dr. Erika talks about getting kids excited about science

BY KRISTIN FORD / ALLEARS BLOGGER / FEBRUARY 27, 2014



To celebrate National Engineers Week at Walt Disney World, aerospace and defense contractor Raytheon is hosting a science theater production for children this week. The "Science Thrills Live" show is produced by Science from Scientists, a non-profit



Scientists put emphasis on 'Girl Day'

BY KYLE PLANTZ / GLOBE CORRESPONDENT / FEBRUARY 23, 2014

FOXBOROUGH — Alyssa Caddle leads a double life. Not only is she a New England Patriots cheerleader, the Boston resident also holds two degrees in engineering and works as a program manager for EMC's office of sustainability in Hopkinton. On Thursday, during February school vacation week, she helped show about 300 Girl Scouts and other students that science and math are all around us, and they can be fun and exciting to study, too.

"We look at all these young women right here as the next generation of technological workforce," said Allison Jeannotte, director of strategic initiatives at Raytheon. "Doing an event like this helps us to get them not only interested in science and technology, but excited about it and excited about pursuing those careers, because when you look at careers of tomorrow, they are very focused on technology and innovation."

CampBio brings out the scientists in kids

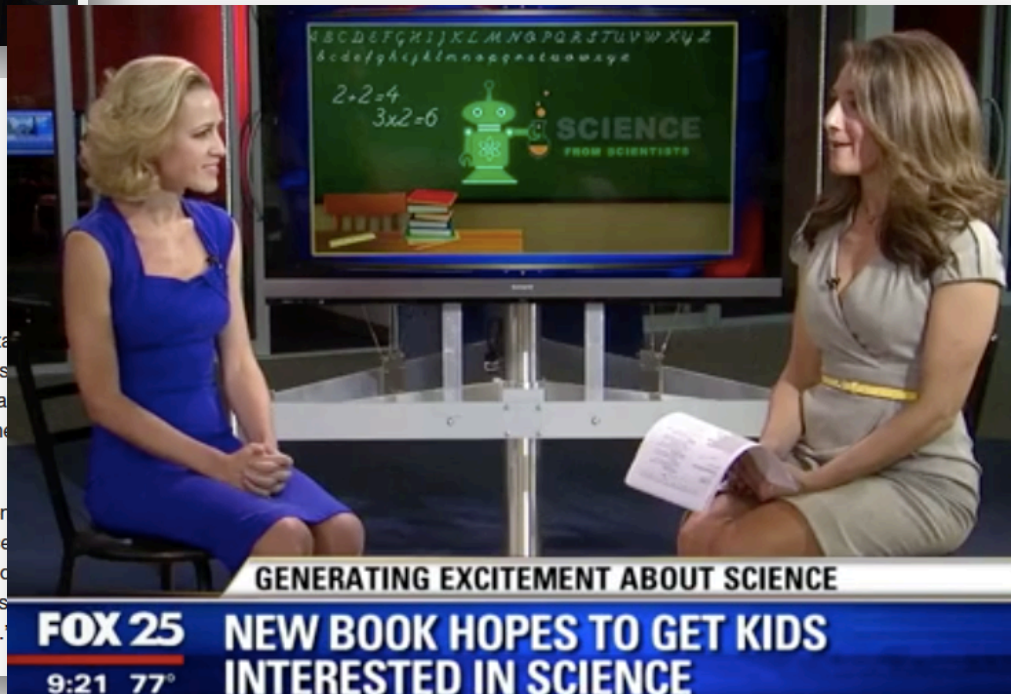
BY KELLY GIFFORD | GLOBE CORRESPONDENT AUGUST 22, 2014

Being stuck in a classroom is the last place any middle schooler wants to be during summer vacation. But when the classroom is the world-renowned Whitehead Institute, the teachers are real scientists, and the assignments include dissecting frogs and extracting DNA, spending time in the classroom doesn't seem all that bad.

Seventeen New England rising sixth-, seventh-, and eighth-graders recently attended CampBio, a weeklong science camp collaboration between the Whitehead Institute and Science From Scientists, aimed at sparking

Johan Jaenisch, technical assistant at Whitehead, spoke to the students during plant biology day. He said for many older ones, having a stuffy teacher break someone's interest.

"There are so many barriers to entry in these fields," he said. "But, for instance, a lesson about plants and nutrition by working with the plants themselves, simple things that spark interest."



Executive Staff

Dr. Erika Ebbel Angle

Founder, Chairman,
& Executive Director

Dr. Audra Kennedy

Program Manager
Parent Engagement

Dr. Alicia Bielik

Chief People Officer

Dr. Maureen Griffin

Lead Curriculum
Developer

Amanda Schutt

Chief Operations Officer

Dr. Catherine Sukow

Lead Curriculum
Developer

Cortney Wieber

Director of Education

Beth Zylinski

Director Web Solutions
& Social Media

Norma Sullivan

Program Manager
Prof. Development

Warren Long

Director, SfS West



Board of Directors

Erika Ebbel Angle
Founder, Chairman,
and Executive Director

Patricia Haddad
MA State
Representative

Jim Ellard
CEO, New England
Biolabs

Judd Rottenberg
Principal, Long's
Jewelers

**Isa Kaftal
Zimmerman**
IKZ Advisors

Dick Merrill
Educator, Curriculum
expert, Science Fair
Chair

Colin Angle
Co-Founder, Chairman
and CEO, iRobot

Josh Seftel
Emmy nominated
Producer, NOVA

